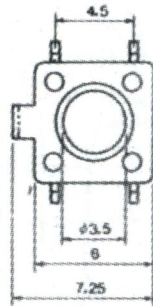
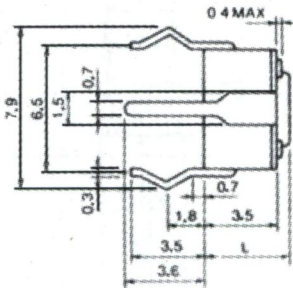


SHEET 1/1

Elcon



- 1. Contact : Mechanical Contact
- 2. Rating : DC 12V, 50mA
- 3. Travel : $0.25 \pm 0.2\text{mm}$
- 4. Contact Resitance : -0.1
: $100\text{m}\Omega$ Max.
- 5. Life : 100,000 Cycles Min.
- 6. Operating force : 160 ± 50 gf

MODEL NO.	ET 1105 A 2	ET 1105 B 2	ET 1105 C 2	ET 1105 D 2	ET 1105 E 2	ET 1105 F 2
L	4.3	5.0	7.0	8.0	9.5	12.5

Copyright Elcon [India]. Unauthorised use and distribution of this document is strictly forbidden.

PART NAME:- ET1105A2

PREPARED BY

MAHESH

REVIEWED BY

A.S BISHI

TOLERANCE

UP TO 10 : ± 0.3
 OVER 10 TO 100 : ± 0.5
 OVER 100 : $+1$

DATE

16.07.11

UNIT

MM

SCALE

N.T.S.

